

Target Design Meeting

Nozzle & Hg Collection Tests, Design Requirements, Instrumentation, Containment, Windows, Diagnostics, Controls, Base Support Structure, ...

Van Graves, Phil Spampinato

**Joseph Henry Laboratories
Princeton University**

November 15-16, 2004

Topics/Issues For Discussion

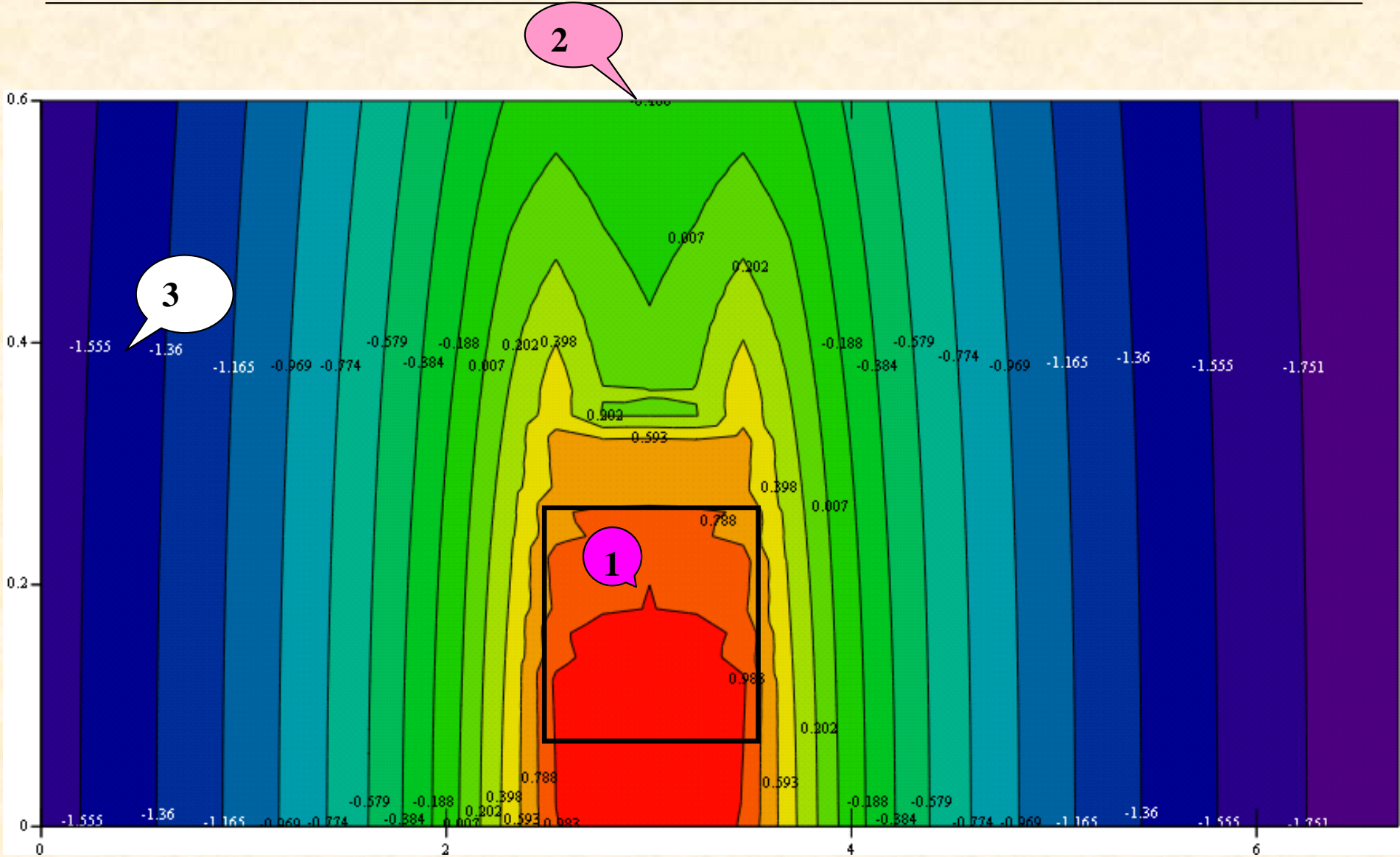
- **Need an interpretation of the requirements in ISO 2919, Table 2, Class 2**
 - **Temperature: -40°C to 80°C**
 - **External pressure: 25 kPa (60 psi) to atmospheric**
 - **Impact: 50 grams from 1 meter**
 - **Vibration: 3 X @ 10 minutes; 25-500 Hz @ 49 m/s²**
 - **Puncture: 1 gram from 1 meter**
- **Position of the nozzle relative to the PB line**
 - **Can the jet be above the PB line with a 60-cm interaction length?**
 - **Must the jet have a 100 mrad angle with the B-axis?**

Topics/Issues For Discussion (cont.)

- **Containment (air activation)**
 - air atmosphere in the primary and secondary containments, not He in the solenoid bore (~0.3 m³ of air)
- **Stray magnetic fields**
 - Can the base support structure be carbon steel?
 - Will the motor/magnet operate properly in modest fields, for example
 - impeller at 1750 rpm in a ~0.1 T field (#3 in next slide)

Stray Magnetic Field Plot

Magnetic field distribution: the axes are in meters; the rectangle is one half of the solenoid.



$(xyz_0, xyz_1, \log(xyz_2))$

Topics/Issues For Discussion (cont.)

- **Can the G-10 cylinder support the target insert tube and the contained Hg?**
- **What are the dimensional tolerances for the tube?**
- **Diagnostic windows**
 - **Viewing locations: how many and where?**

Topics/Issues For Discussion (cont.)

- **Assembly/Installation**

- Need for fiducials (optical targets) on the solenoid and the target system for precise alignment of target, magnet, and beam line

- **Installation at CERN**

- What are the constraints for lowering components into the tunnel area
- What is the maximum “foot print” for maneuvering components into the TT2A tunnel
- Control room layout
- Others ...

Topics/Issues For Discussion (cont.)

- **Hg Target System Instrumentation:**
 - Vapor monitor in secondary containment, 5 minute sampling rate; remote readout (Jerome)
 - Flow meter (venturi ??) to monitor velocity in supply tube; remote readout
 - Temperature to monitor sump tank; remote readout
 - Level sensor to monitor sump tank; remote readout

Topics/Issues For Discussion (cont.)

- **Electrical Requirements**

- **3-Phase, 460 VAC/90 A, 5060 Hz for the pump drive motor**
- **Variable frequency drive, manual or computer controlled**
 - **Interfaces with solenoid control system and proton beam control system**
 - **Emergency shut off coupled to PB line emergency shutoff, as well as manual override**

Hg Target Operating Scenario

Preliminary Hg Target System Normal Operating Scenario

Time (sec.)	Solenoid	Target	Proton Beam
0-30.0	-	Ramp to 20 m/s	-
30.0-39.5	Ramp to full current	Maintain 20 m/s	-
39.5-40.5	Maintain full current	Maintain 20 m/s	24 GeV, 1 MW
40.5-41.0	Begin de-energizing	Shut down pump	-
41.0-45.0	De-energize to zero	-	-
45.0-1800.0	Cool down to ~80°K	Stand by	Stand by

Princeton Tests Using 20-Hp Pump

- **Assess nozzle characteristics**
 - Change velocity at nozzle (10, 15, 20, 25, ... m/s), plot jet profile
- **Assess Hg “catcher” configurations for**
 - Turbulence
 - Back splash
 - Volumetric recovery

Test Data Is Needed ASAP!