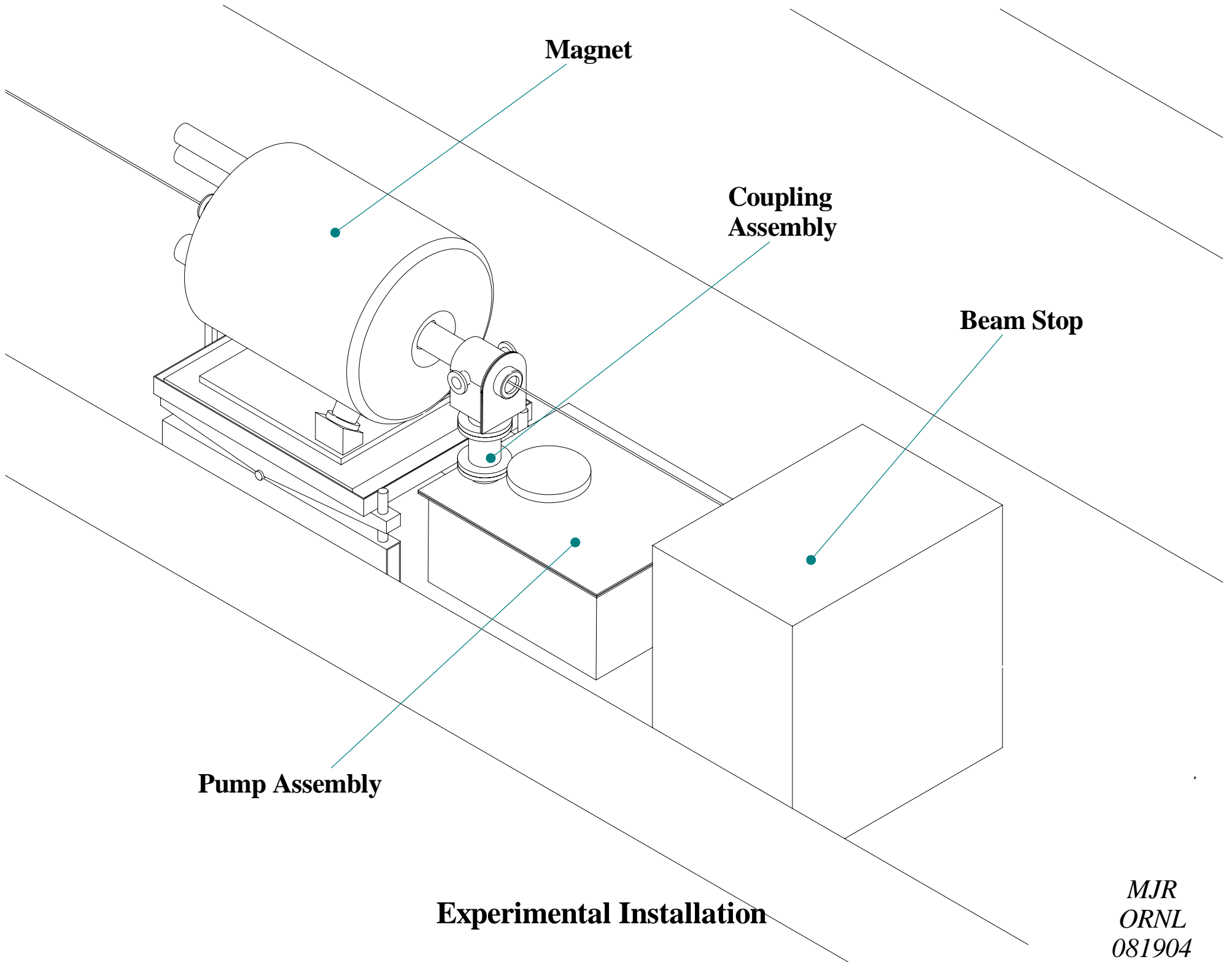


## **Design Issues**

- 1. Vibration Control**
- 2. Temperature Rise due to friction heating**
- 3. Cooling Of Mercury during down+time**
- 4. Integration of Nozzel Assembly**
- 5. Size and Capacity of Mercury Pump**
- 6. Assembly Requirements**
- 7. Mercury Pump Power Requirements at CERN**
- 8. Materials of construction**



**Magnet**

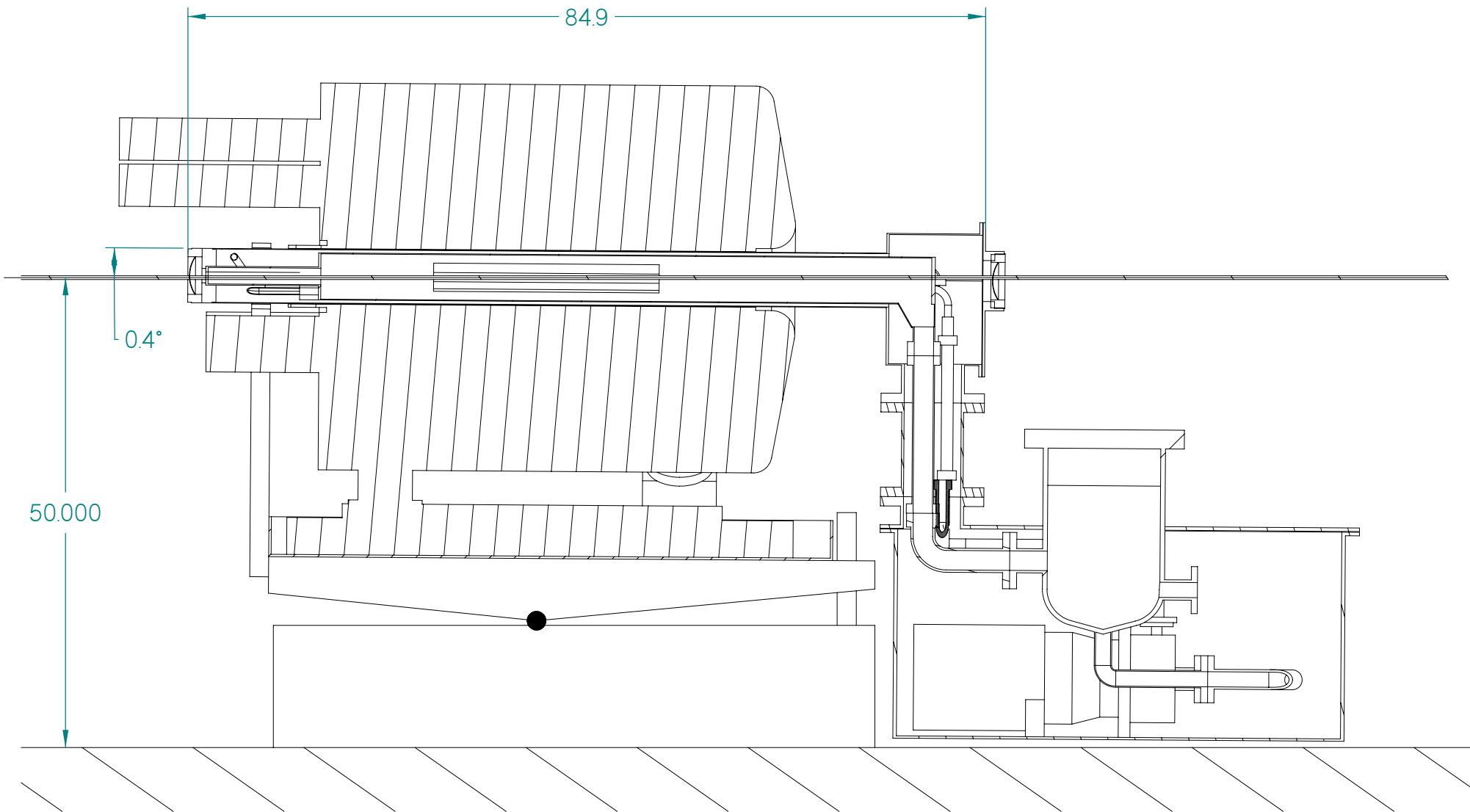
**Coupling  
Assembly**

**Beam Stop**

**Pump Assembly**

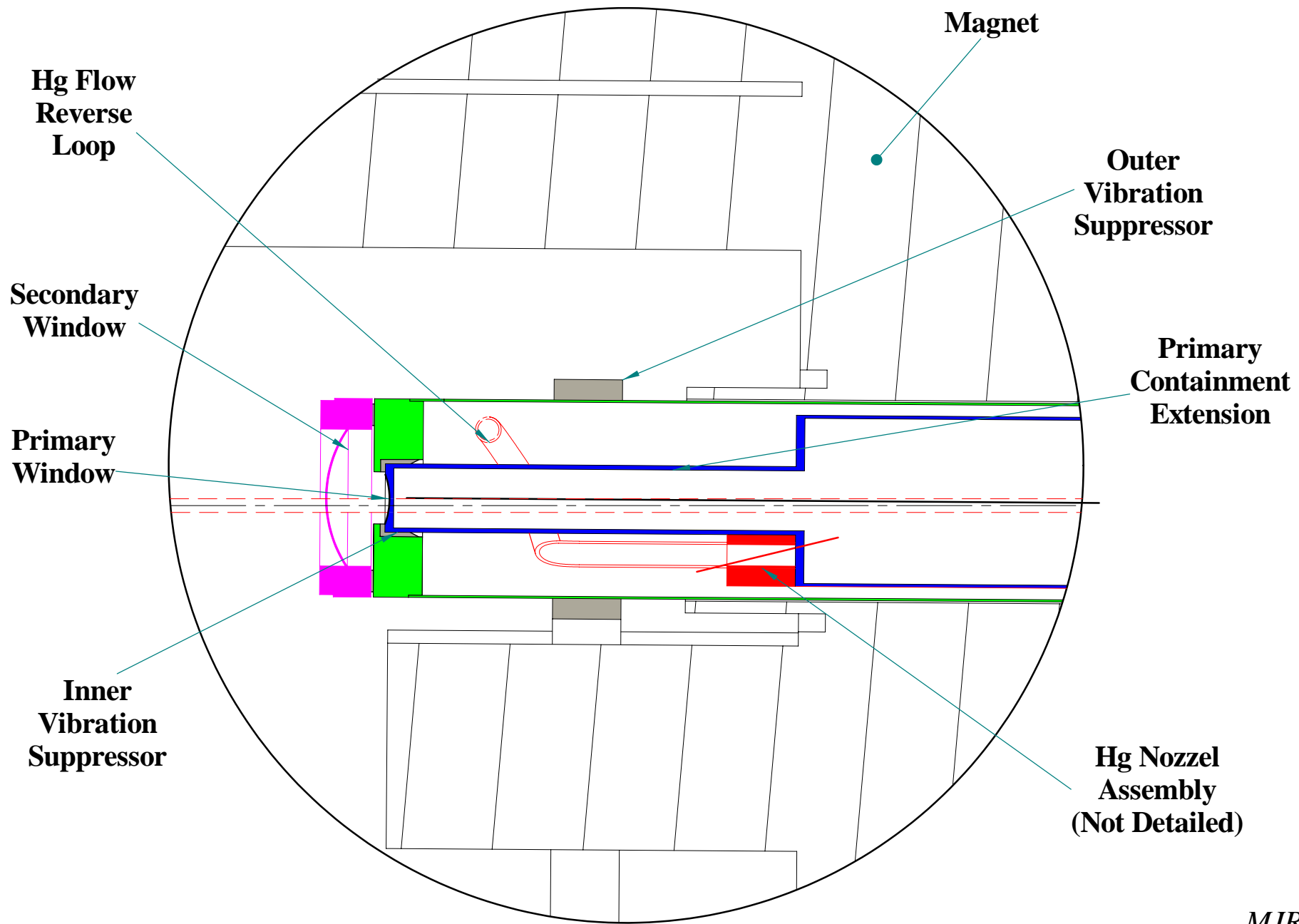
**Experimental Installation**

*MJR  
ORNL  
081904*

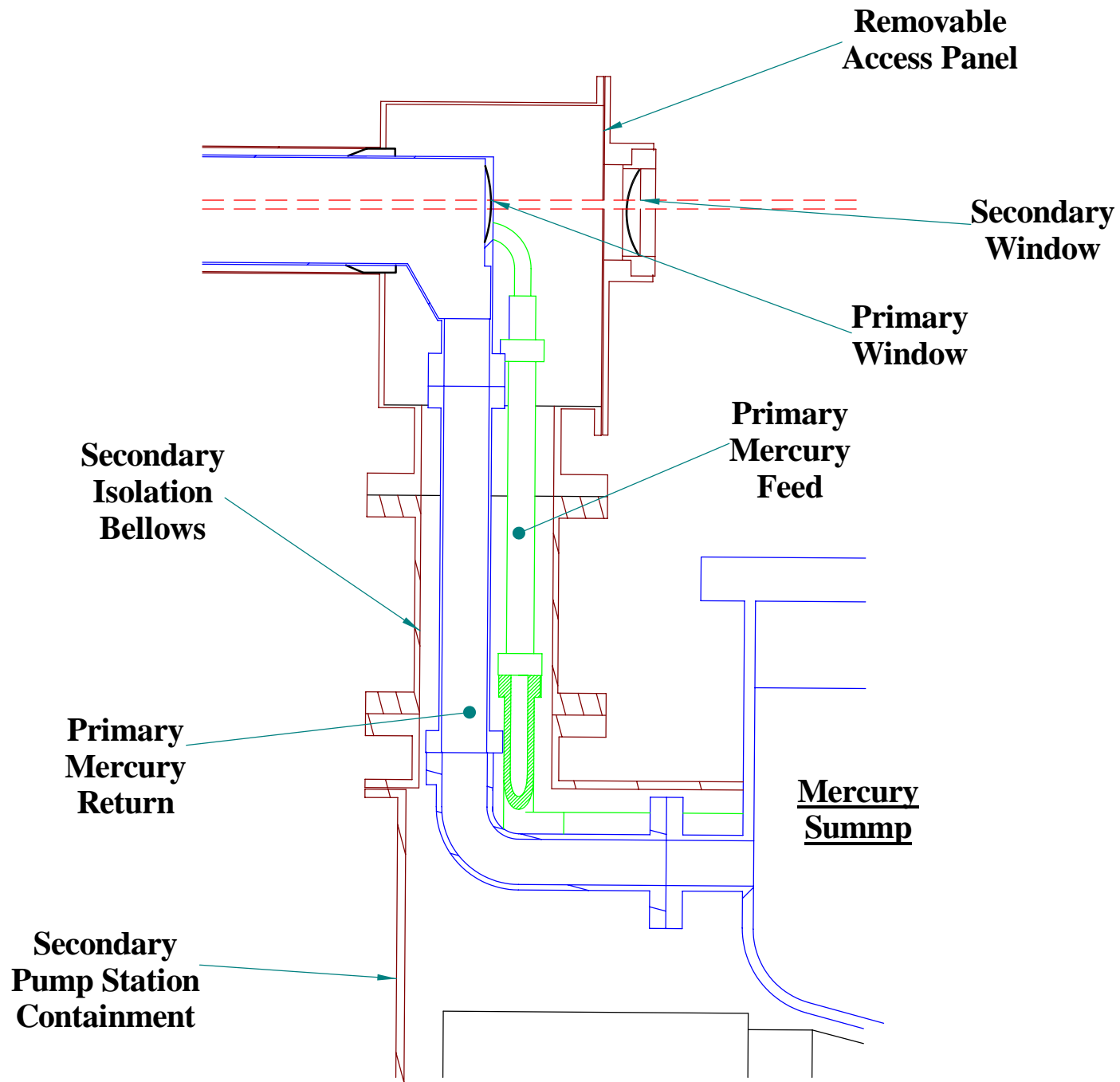


**Center Section of Experimental Apparatus**

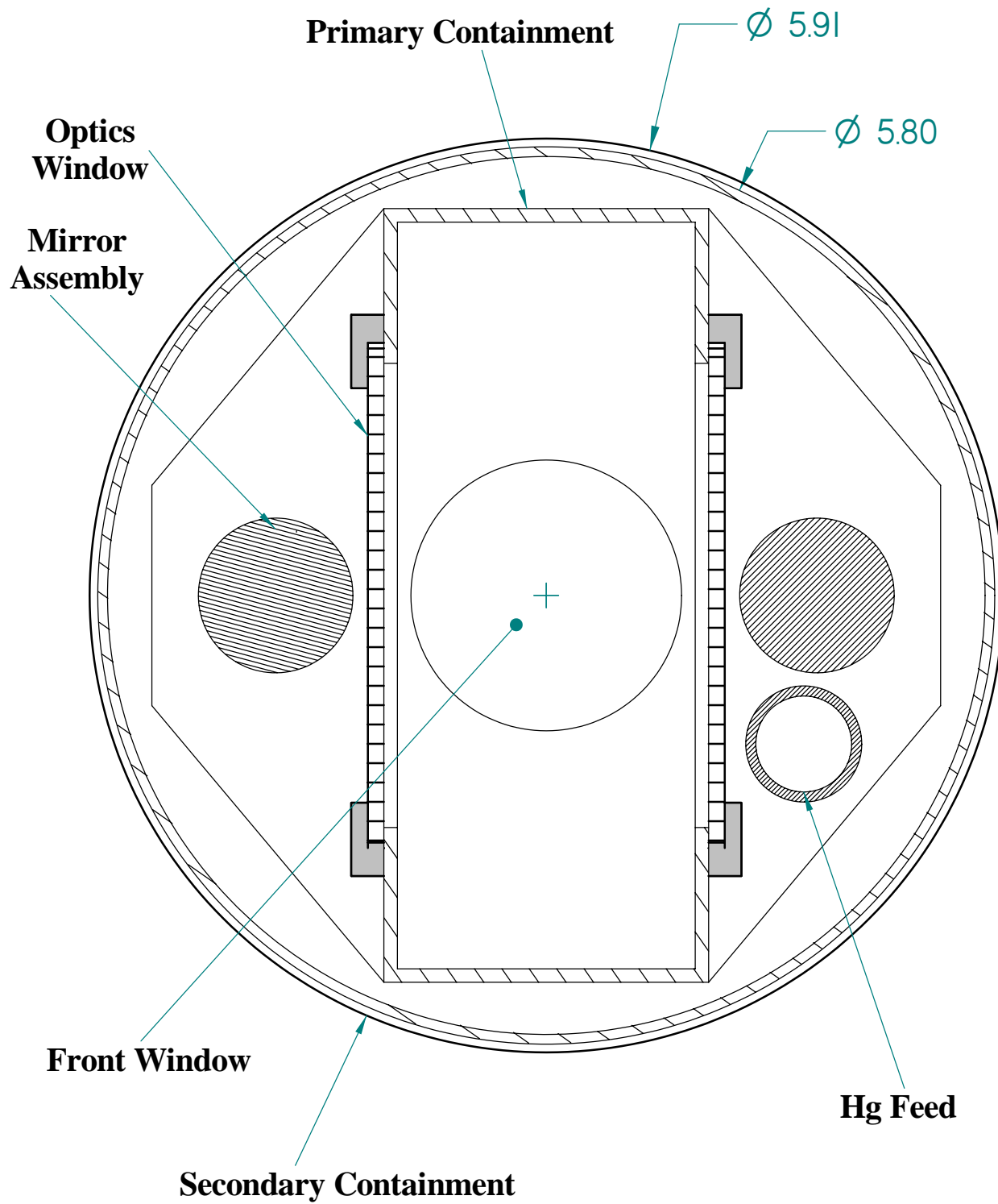
MJR  
ORNL  
081904

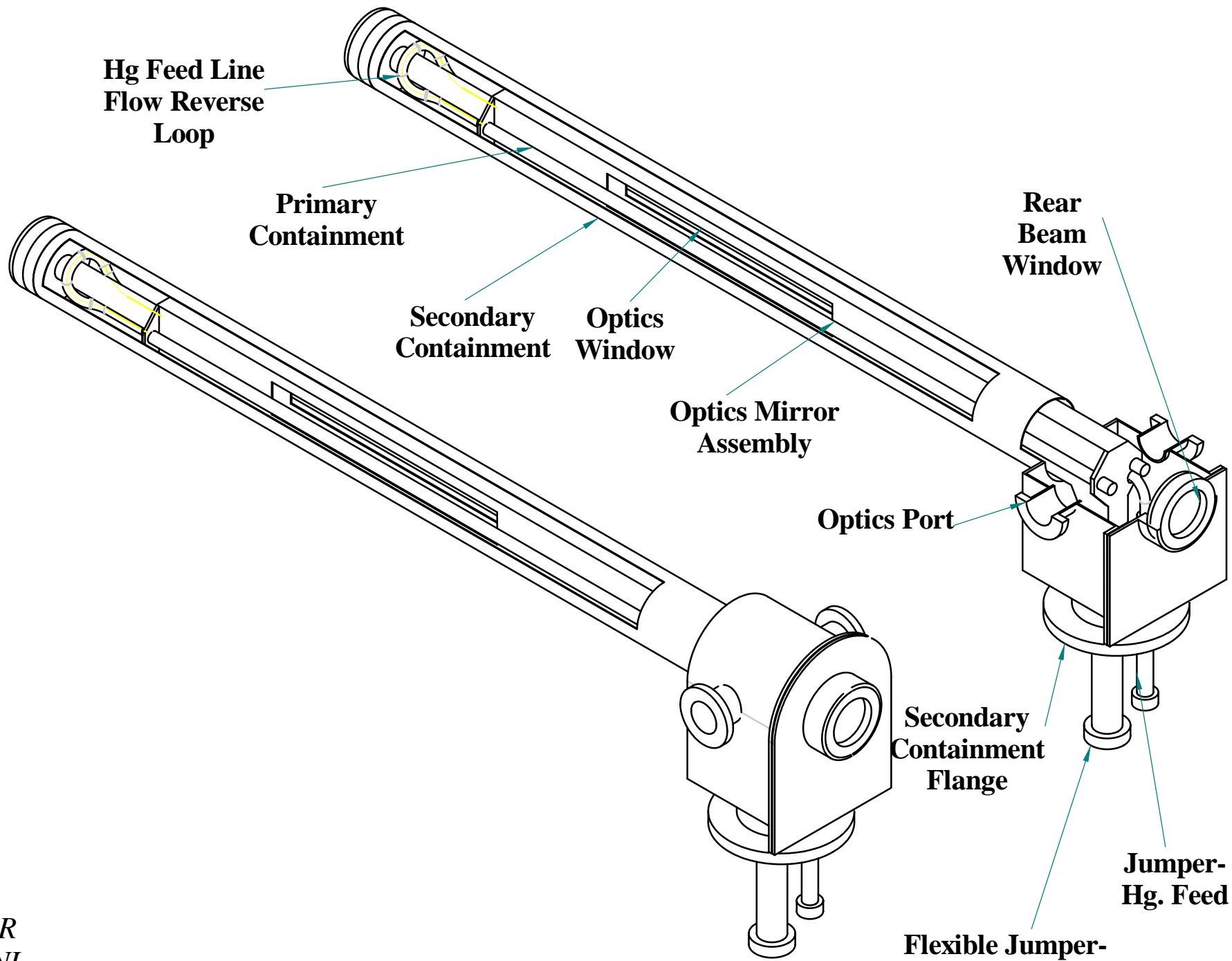


**Detail of Front End of Mercury Tube**



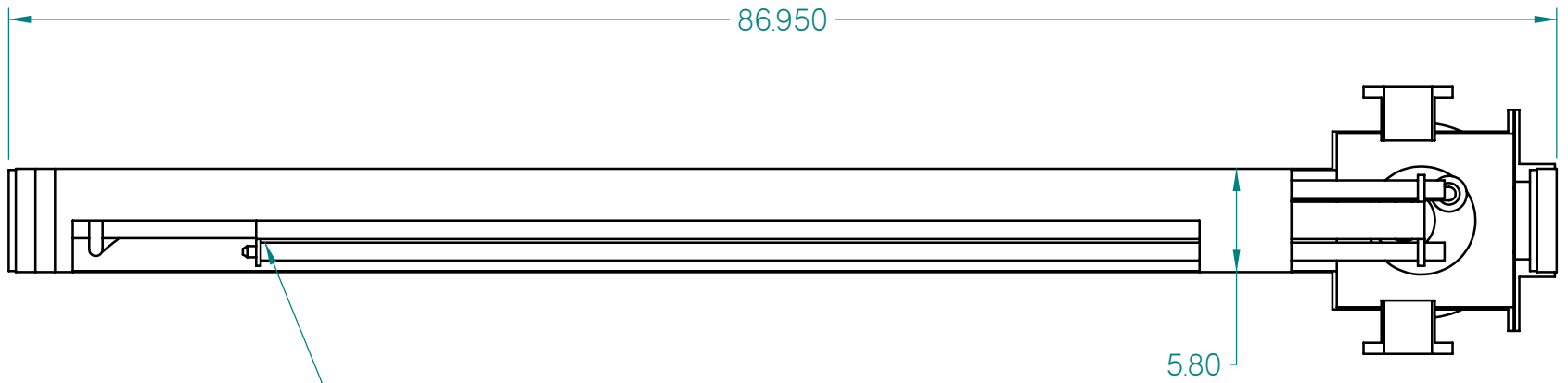
**Detail of Back End of Mercury Tube Assembly**





**Mercury Tube Assembly**

*MJR  
ORNL  
081904*



Optics Supported and Aligned  
On Primary Hg Containment Housing

Transition Box-  
Secondary  
Containment

